

MAXIMUM[®]
digital technology

MR-1000

User manual



2. BEFORE USE

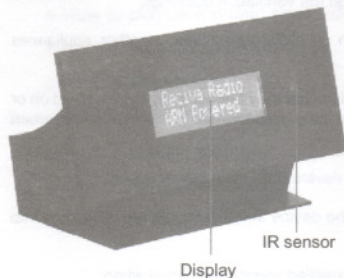
Before you can use your Internet radio, you need the following equipment:

- A broadband Internet connection.
- An Ethernet port or a wireless access point (Wi-Fi) connected to your broadband Internet, preferably via a router.
- If your wireless network is configured to use Wired Equivalent Privacy (WEP) or Wi-Fi Protected Access (WPA) data encryption then you need to know the WEP or WPA code so you can get the Internet radio to communicate with the network.
- An active speaker system, such as a subwoofer and two satellite speakers.

The Internet radio should work anywhere within 100 meters of the wireless access point.

Before you continue, make sure that your wireless access point is powered up and connected to your broadband Internet. To get this part of the system working you must read the instructions supplied with the wireless access point.

MAIN UNIT



Connections

Connect the small connector of the power adaptor to **5V DC** at the rear of the radio, and then connect the power adaptor to a suitable wall outlet. For a wired access to the Internet, connect an Internet cable (not supplied) to **LAN** at the rear of the radio and to your Internet connection or router. Connect the supplied RCA audio cable to the color-coded outputs **L** and **R** at the rear of the receiver and to the inputs of your speaker system.

REMOTE CONTROL

	ON/OFF (Standby)
VOL+/Δ	Increase volume
TUNE-/\triangleleft	Search contents
TUNE+/\triangleright	Search contents
VOL-/∇	Decrease volume
SELECT	Select and confirm
REPLY	No function
BACK	Return to previous screen
1/\leftarrow	Station memory 1/ Skip to previous track
2/$\parallel$$\rightarrow$	Station memory 2/ Play/Pause
3/\rightarrow	Station memory 3/ Skip to next track
4/MODE	Station memory 4
5/\blacksquare	Station memory 5/ Stop
6/BROWSE	Station memory 6/ Display track name
7	Station memory 7
8	Station memory 8
9	Station memory 9
10	Station memory 10
SHIFT	Shift to presets 11-20
ALARM	Access alarm and sleep timer settings



Open the battery compartment and insert 2 x AAA batteries and close the battery compartment again. Please observe the polarity when inserting the batteries. Point the remote control towards the radio; the range is approx. 5 m with a 60° angle. The lifespan of the batteries is approx. 1 year. Remove the batteries during storage or when not using the radio for a longer period of time.

3. CONNECT THE RECEIVER TO YOUR INTERNET NETWORK

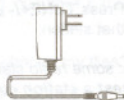
The wired port is in the highest priority (or powered by MCU module control), it is used by default. You can also choose to use the Wi-Fi port.

a. Power up the receiver

Plug the cable from the mains adapter into the socket labeled **5V DC** on the rear of the receiver.

CAUTION: Use only the mains adapter supplied with the radio. Connecting a power supply with a different rating will cause permanent damage to the radio and may be hazardous.

The display on the front of the radio will light up and show "Reciva Radio ARM Powered". Once you have set the clock and alarm, the radio displays in standby mode "Reciva Radio", current time and alarm time (in brackets). The clock is displayed in 24-hour format.



b. Connect the receiver to your Internet network

- **Wired port**

If the wired port is connected, after a few seconds the display will change to "Stations". To listen the radio, please refer to next section "4. Playback an Internet radio station".

- **Wireless connection**

If you are not connected to a wired service after a few seconds, the text will change to display "Connecting to network". When it does, press **SELECT** on the remote control. The receiver will now scan for all available wireless networks and will display "Scanning".

*Note: to cancel an action, you can press **BACK** and get back to previous screen.*

If no wireless network can be found, the display will show "No Wireless Networks Found". In that case you will have to get your wireless access point working – refer to the instructions supplied with it.

When the radio finds your wireless network, it displays the ESSID for the access point. It is possible, and in some locations highly likely, that the receiver will find more than one wireless access point. In such case you can choose which one you want to connect to by pressing **TUNE+/-** on the remote control and **SELECT**.

Note: ESSID is the name given to the access point by the person who set up the network – for example: "My Home Network".

If your network is not configured to need an encryption code, the screen should display "Connecting to network" and afterwards "Network OK". In case "Enter WEP key" or "Enter WPA key" is displayed, then the network is using one of the encryption systems: Wired Equivalent Privacy (WEP) or Wi-Fi Protected Access (WPA). You therefore need to enter the correct WEP or WPA code into the receiver to get it to communicate with your network.

After 3 seconds, the display goes automatically into code entry mode. To enter the code, use the knob to select each character of the code in turn, and press **SELECT** after each character. After the final character, use **TUNE+/-** to select "END" and press **SELECT**.

If the code has been correctly typed in, the receiver should now be able to connect to the network.

Note: Only the person who set up the network in the first place knows this code; if that person is not you then you need to find out about it.

Note: WEP and WPA codes are sensitive to upper and lower case characters so you must enter them exactly.

- **Set wired, wireless or auto as default network access**

Wait for "Stations" to be displayed on the receiver or press **BACK** until "Stations" is displayed.

Press **TUNE+** until the radio display shows "Configure". Press **SELECT** until the radio display shows "Network Config" or press **BACK** until "Network Config" is displayed.

Press **SELECT** until the radio display shows "Wired/Wireless" or press **BACK** until "Wired/Wireless" is displayed.

Press **SELECT** and the receiver will display "Auto" or "Wired Only" and "Wireless Only". Press **TUNE+/-** until the required network access is displayed. Then press **SELECT** and you will connect to the wired or wireless network.

5. MEDIA PLAYER FUNCTION

The Media Player allows you to play audio files (AAC, AIFF, MP3, RM, WAV, WMA) and playlists (M3U) stored on a networked PC. It is compatible with Windows 2000 and Windows XP.

a. How to playback music stored on my PC

Set up your PC to allow the receiver to access your audio files via Windows Shares

1. Please ensure that your PC is available on the network for your Internet radio, then, using Windows Explorer, locate the folder where your audio files are stored.
2. Right click on the folder and select "Properties".
3. Click on "Sharing" and select "Share this folder on the network" and "Allow network users to change my files".

Note: depending on your Windows version, it is not always possible to make "My Documents" folder or any of its sub-folders (e.g. "My Music") shareable. In that case we recommend you to create a new folder with the music you intend to playback on your receiver.

Locate the shared audio files from the receiver

1. Power up the receiver and wait for "Stations" to be displayed on the radio, or press **BACK** until "Stations" is displayed.
2. Press **TUNE+/-** until the radio display shows "Media Player".
3. Press **SELECT** and press **TUNE+/-** until "Windows Shares" is displayed.
4. Press **SELECT** and press **TUNE+/-** until "Scan for PCs" is displayed and press **SELECT** again.
5. The radio will now display "Finding PCs". Once the radio is ready, press **TUNE+/-** to highlight the correct PC and press **SELECT**. The radio will search for shared folders.
6. Press the **TUNE+/-** button to highlight the correct shared folder and press **SELECT**.
7. The radio will display "File Scan..." as it scans through the media files in the shared folder. Text on the bottom row of the display will change to indicate that the file scan is in progress. If you have a large number of audio files this could take several minutes to complete.
8. Once the radio has finished scanning, it will display "By Album". You can now browse through the scanned media files, which will now be organized "By Album", "By Artist" and "Playlists" – if available.

Note: the first time the file scan is done a file called "reciva_media_cache" is created in the folder where the audio files are stored. This is in order to speed up subsequent file scans.

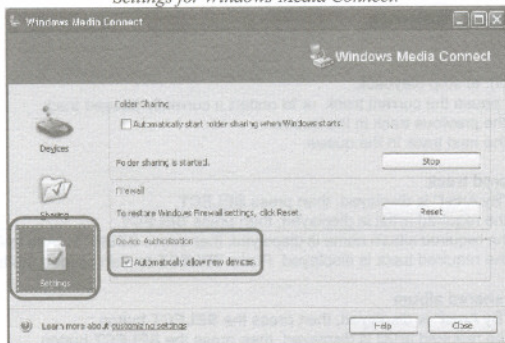
b. Access files from UPnP server

How to set up a PC with Windows OS to allow the receiver to access your audio files via an UPnP server

If your PC is running Microsoft Windows XP, then you can use Windows Media Connect to act as your UPnP (Universal Plug and Play) MediaServer 1.0 compliant server. Windows Media Connect may be downloaded from Microsoft's website and installed (follow its installation wizard).

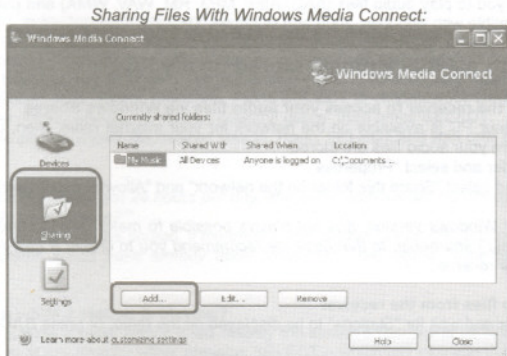
1. You will first need to configure Windows Media Connect to allow certain devices to connect to it. This can be done by selecting 'Settings' from Windows Media Connect and checking the box for 'Automatically allow new devices', as shown below.

Settings for Windows Media Connect:



Note: to increase the security level security with Windows Media Connect, you can disable the 'Automatically allow new devices' option and only allow certain devices to connect. You can select which devices you want to connect in the 'Devices' section and by clicking on 'Deny' / 'Allow'.

- You will then need to select which folders on your PC you want Windows Media Connect to share with your Internet radio. This can be done by selecting 'Sharing' then clicking the 'Add' button to add your folders.



Locate the UPnP from the receiver

Once you have configured the UPnP server to share media files with the Internet radio, follow the instruction to playback the files:

- Press **BACK** until you get to the radio's top-level menu and then press **TUNE+/-** and select "Media Player".
- Press **TUNE+/-** to highlight "UPNP Servers". Press **SELECT** and the radio will scan for all available UPnP servers.

Note: It may take a few seconds for the radio to complete its scan and before the scan is completed, the radio will display "Empty". The radio will continue to display "Empty" if no UPnP servers are found.

- After a successful scan, select your UPnP server, press **TUNE+/-** if there is more than one UPnP server, and then press **SELECT**.

*Note: At this stage, your Internet radio should be listed in Windows Media Connect and can be viewed from the 'Devices' screen; your radio will be displayed with its MAC address. To verify that the MAC address listed is your radios, select "Configure" on your radio's menu and then press **TUNE+/-** until you can select "Network Config". Then press **TUNE+/-** until "View Config" is displayed, press **SELECT** again. Then press **TUNE+/-** and view your radio's MAC address under "MAC Address" sub-menu.*

- The radio will now list the media categories available from the UPnP server, e.g. "Music", "Playlists" etc. Press **TUNE+/-** to select which category you wish to browse, press **SELECT** and chose the sub-category you want to access. For example, you could select "Music" and then "Album". Press **TUNE+/-** to highlight the media files that you wish to play and press **SELECT**.

The radio will display "Add to Queue". Press **SELECT** and the radio will add the tracks to its queue and start to play them automatically.

c. Playback features

Playback commands

- /5 (on the remote control): to stop playback.
- ||/2: to either start play, pause the current track, or to restart a currently paused track.
- ⏮/1: to start playback of the previous track in the queue.
- ⏭/3: to start playback of the next track in the queue.

Listening to a single shared track

- Press **TUNE+/-** until "By Artist" is displayed, then press **SELECT**.
- Press **TUNE+/-** until the required artist is displayed, then press **SELECT**.
- Press **TUNE+/-** until the required album name is displayed, then press **SELECT**; "Add to Queue" will be displayed.
- Press **TUNE+/-** until the required track is displayed. Press **SELECT** to start playing the track.

Listening to a complete shared album

- Press **TUNE+/-** until "By Artist" is displayed, then press the **SELECT** button.
- Press **TUNE+/-** until the required artist is displayed, then press the **SELECT** button.
- Press **TUNE+/-** until the required album name is displayed, then press the **SELECT** button; "Add to Queue" will be displayed. Press **SELECT** to start playing the album.

Queuing up tracks for playback later

Highlight the required track and press **SELECT**. "Track Added To Queue" will be displayed.

6. GENERAL SETTINGS

a. Time and date settings

Press **SELECT** on the remote control. Note that to cancel an action, you can press **BACK** and you will get back to previous screen.

1. Press **TUNE+/-** until you reach the "Configure" menu, and press **SELECT**.
2. Press **TUNE+/-** until you reach "Clock Setup", and press **SELECT**.
3. Press **TUNE+/-** until you reach "Set Time/Date", and press **SELECT**. Press **TUNE+/-** until the hour setting is correct, then press **SELECT**. Press **TUNE+/-** until the minute setting is correct, then press **SELECT**;
4. Now "Set Date" is displayed. Press **TUNE+/-** until the current date setting is correct, and press **SELECT**. Press **TUNE+/-** until the month setting is correct, and press **SELECT**. Press **TUNE+/-** until the year setting is correct, and press **SELECT**.

The display says "Time and Date Set" with the new time shown beneath for 3 seconds, then returns to the radio station display.

b. Alarm/ sleep timer settings

Press the **ALARM** key on the remote control, the display shows "Set Alarms". Note that to cancel an action, you can press **BACK** and you will get back to previous screen.

How to set a time for the receiver to turn off

If you want to set the sleep timer to automatically turn off the receiver after a preset time, press **TUNE+/-** until the display says "Sleep Timer", then press **SELECT**. Press **TUNE+/-** to set the sleep time in 15-minute steps up to 3 hours or to off, then press **SELECT**; the display shows "Sleep Timeout" and the corresponding time.

How to set a time for the receiver to turn on (alarm function)

1. If you want to set one of the alarms, press the **TUNE+/-** button until the display says "Set Alarms", and press **SELECT**. Press **TUNE+/-** and chose between "Disable all" and the alarms 1 to 5.

Note: If you select "Disable all" then the alarm is turned off.

2. If you choose one of the alarms 1 to 5 you will be able to set the appropriate time for the alarm (see time/date settings instructions).
3. After setting the alarm time the display prompts you to set the frequency of the alarm. Press **TUNE+/-** to chose either "Once", "Every Day", "Weekly", "Weekdays" or "Weekends", then press **SELECT**. Alternatively select the weekday between "Monday" to "Sunday" and press **SELECT**.
4. Press **TUNE+/-** to select the alarm mode between "Buzzer" and one of your radio presets, and press **SELECT**.
5. The display says "Alarm Set" with the time and the other details in ticker mode beneath for 3 seconds and then returns to the normal radio station display.

When changing the alarm settings later (current time and date is already set) you can access the settings via the menu (with **TUNE+/-** and **SELECT**) or alternatively with the **ALARM** button.

c. Configure menu

Choosing the option from the Configure menu

1. Press the **SELECT** button. Please note: If you make a mistake at any point, press the **BACK** button to go back to the previous screen.
2. Press the **TUNE+/-** button until "Configure" is displayed, then press the **SELECT** button.
3. Press the **TUNE+/-** button until the display shows the desired option.
4. Press the **SELECT** button to select the option shown on the display. The options are explained below.

Network Config

Enables you to scan again for connection to another wireless network, or to manually configure the network parameters. Use this if you take the Internet radio to another building where you want to use it. The "Network Config" menu also allows you to choose whether or not the Internet radio displays a warning message when its network signal strength is low. You can enable this feature by selecting "Signal Warning" and then selecting "Yes".

Version

Displays the versions numbers of the various parts of software and hardware on your Internet radio.

Upgrade Firmware

Use this option to download new firmware for the radio from the Reciva portal on the Internet. If there is new firmware available, then the radio will prompt you if you want to download it or not. Note, at this stage, you can press the radio's **BACK** button to cancel the radio beginning a firmware upgrade. A firmware upgrade may take several minutes, so do not switch off the power to the radio until the operation is complete; otherwise the radio may become permanently damaged.

Language

Allows you to change the display language, select between English GB/US, French, Spanish, German, Danish, Italian, Dutch, Portuguese, Finnish, Swedish and Norwegian.

Factory Reset

Puts all the settings back to their defaults as they were when they left the factory. If you perform a factory reset on your radio you will lose all your presets and your wireless network connection.

Register

This will display a key that can be used to register the radio on the Reciva Customer portal: <http://www.reciva.com/>


Clock Setup

Use this option to set the time, to set an alarm and to view the current alarm setting, see chapters "SETTING CURRENT TIME AND DATE" and "SETTING THE ALARM/SLEEP TIMER".

Wi-Fi Strength

Displays the Wi-Fi strength as a percentage.

TECHNICAL SPECIFICATIONS

Dimensions	Adaptor Unit: 175.4 x 86 X 98.5 mm, Remote Control: 142.5 x 49 x 30.2 mm
Weight	Adaptor Unit: 300 g, Remote Control: 55 g
Power supply	AC 100-240V~ 50/60Hz (power adapter)
Power consumption	DC 7.5V Watts
Remote control	DC 3V  (2 x AAA / UM-4 / LR03, 1.5V batteries, not supplied)
Accessories	RCA to RCA stereo audio cable (white/red) Power adaptor: Input: AC 100-240V~ 50/60Hz, 0.18A; Output: 5V, 0.6A Remote control

Subject to change without prior notice.