

SCANSONIC

I100 BT

User Manual

I100 BT

Internet radio adapter with Wifi and Bluetooth



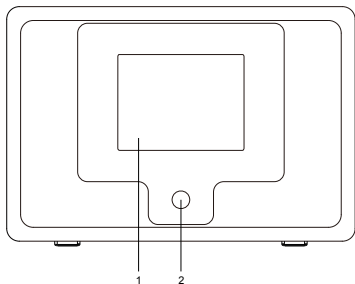
UK User Manual

DK Brugervejledning

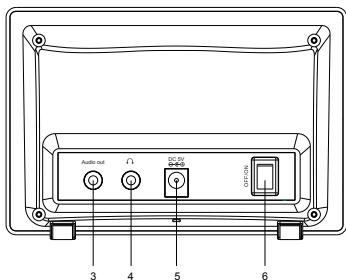
DE Bedienungsanleitung

Please read this user manual carefully before using receiver

LOCATION OF CONTROLS



1. 2.4" TFT color display
2. Infrared remote control sensor
3. 3.5 mm audio out socket: Connect external powered speakers with 3.5 mm plug or RCA adaptor with 3.5 mm plug
4. 3.5 mm earphone jack.
5. DC IN socket
6. Power On/Off switch



REMOTE CONTROL



1. : Standby button
2. : Mute
3. 0-9: Favorite station key/input letters and numbers for WiFi Encryption code
4. : Dim the display
5. : Favorite button
Long press to preset station. Press it briefly to recall station.
Adding station to your favorite list
6. : Cursor up
7. : Cursor down
8. : Cursor left/back to previous menu
9. : Cursor right
10. OK: confirm button
11. : Alarm button
12. : Sleep Timer
13. Vol+: Volume up
14. Vol-: Volume down
15. : Main Menu
16. Mode: Switch between Internet radio, Media Center (UPnP) And Bluetooth
17. EQ: Equalizer
18. : Previous song (for UPnP)/Previous radio channel
19. : Play/pause (for UPnP)
20. : Next song (for UPnP)/Next radio channel

BEFORE YOU START

Please ensure the following is ready:

- * You have a broadband internet connection.
- * A wireless (Wi-Fi) broadband router is connected to the internet successfully.

The radio supports Wireless B, G and N connection (Wireless N router can also be used with the setting on B or G).

- * You know the Wired Equivalent Privacy (WEP) or Wi-Fi Protected Access (WPA) data encryption code/password. You need to key in the correct code when the radio is connected to the wireless router for network connection.

If you do not know the code/password, please contact the person/technician who set up the router/network for you.

- * The radio can work via Wireless network connection (Wi-Fi connection).

PRECAUTIONS

- * The radio should not be used in a high temperature or high humidity environment over prolonged periods of time as this may damage the unit.
- * Keep the radio away from liquids as it may get damaged. Please switch off the radio immediately if water or liquids is spilled into the radio. Consult with the shop you bought this radio for any question.
- * Avoid using or storing the unit in dusty or sandy environment.
- * Do not open and repair the radio by yourself.
- * Use only the AC adaptor supplied with the radio. Connecting a power supply with a different rating will cause permanent damage to the radio and may be hazardous.
- * Clean only with dry cloth

Key "5" — 5, J, K, L, j, k, l

Key "6" — 6, M, N, O, m, n, o

Key "7" — 7, P, Q, R, S, p, q, r, s

Key "8" — 8, T, U, V, t, u, v

Key "9" — 9, W, X, Y, Z, w, x, y, z

Remark: press '►' to move to next character and press 'OK' button to confirm.

You can also press ▲ ▼ to change the character/number, then press the right key ► to confirm the entry.

After you finish the entry, press the OK button to confirm.

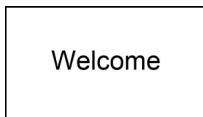
SWITCHING ON THE RADIO

Plug the connector pin of the mains adaptor into the DC jack on the unit. Connect the other end of the adaptor to the wall socket.

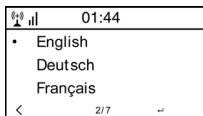
Caution: Use only the main adaptor supplied with the radio.

Connecting a power supply with a different rating will cause permanent damage to the radio and may be hazardous.

The display on the front of the radio will light up and show:



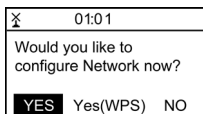
Then you can select your prefer language on the radio.



It will ask you if you want to Enable the “Check Network when Power on”, it is suggested to choose “Yes”. Then the radio will always check the available WiFi network automatically.

CONNECTING TO YOUR WIFI NETWORK

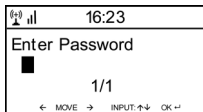
The following screen will appear. You can choose <Yes> to proceed to search for the available WiFi network. If your router has the WPS function, you can select the <Yes (WPS)> to proceed.



It will then start scanning the network. After the search is done, it will display a list of the available router.



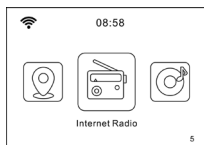
Choose your router from the list, enter the WEP (Wired Equivalent Privacy) or WPA (Wi-Fi Protected Access) code. If your network is not configured to be with the WEP or a WPA code, the unit will connect to the router automatically.



Note: The encryption code would have been set up by the person who set up and configured your network.

Please refer to the “Remote control character list” for you to enter the passwords. Press the “▶” button to go to the next entry, press “◀” button to make correction.

The radio will start connecting to the network. After the router is connected successfully, it will display the menu screen:



You can now start enjoying the internet radio.

Internet Radio

Choose ‘Internet Radio’ from the menu, you can see different functions as below:

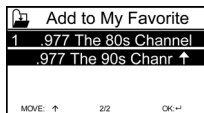
To start listen the worldwide radio stations, select “Radio Station/ Music”,


My Favorite

This is to show the list of your Favorite stations which have been assigned to the presets.

■ To preset a station

While you are playing the favorite station, simply hold and press the * key until the follow screen appear.



The icon  will appear, it means the station is added to the radio preset. Kindly note the Preset 1-5 are reserved for new feature in future. The preset will be saved from Preset #6 onwards.

The presets will be stored in ascending order. You can store up to 250 presets.

■ Edit the presets

You can edit your Favorite list with the following options:

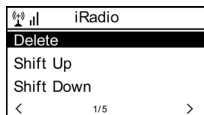
Delete – To delete the selected station

Shift up/Shift down – To shift the selected station to a particular ranking on the list.

Rename – To rename the selected station

Play – press and play the selected station

To do the edit, simply press the ★ button briefly to enter the Preset station list. Choose the radio station that you want to make with the above changes. Then press the Right key ►, it will enter into the edit menu. Then choose your desire action.



■ To recall a preset station

Press the ★ button briefly to recall the favourite list.

Remark: Please note Preset 1-5 is reserved for future use and cannot be preset for radio stations.

Radio Station/Music

Select this option, then you can select your desired radio station by Genre or Location, etc.

Local Radio

If you want to access quickly the radio station located in your area, select this function and it will display the list of the stations available in your area.

Remark: You can set other region as the local radio in the Local radio set up under Configuration.

History

It will show you the radio stations that you have listened in the past.

ServiceSearch Stations

You can find your desire radio station by entering the name of the radio.

Add New Radio Station

If you cannot find your desire station from the Radio station list and you have the URL address, you can input the link here and add to your favorite list.

When the radio station is playing, the display will show a color image transmitted from the radio station.



DLNA

The Internet radio can play music stream from DLNA compatible device, provided that the Internet radio and other DLNA devices are under the same Wi-Fi network.

The radio will appear as “AirMusic” when you try to search it on other devices. If you want to change other name from AirMusic, go to Configuration and DLNA setup to make the change.

Media Center**UPnP (Universal Plug and Play)**

You can stream music from the Networked device which supports UPnP function to the radio to play.

For instance, most of the latest computer laptop supports UPnP, and you can stream music from Windows Media Player application on the computer and listen on your radio.



Please make sure your computer laptop is on the same Wi-Fi network as the Radio before you start using this function

1. If your PC is running Microsoft Windows XP, then you can use Windows Media Player 11 (WMP11) to act as your UPnP (Universal Plug and Play) media server. (For Windows 7 or above, please download the correspond version of Windows Media Player). The latest Windows Media Player may be downloaded from Microsoft's website and install by following the instructions detailed in its installation wizard.
2. Once installed, Windows Media Player will create a library from all the media files available to it on your PC.

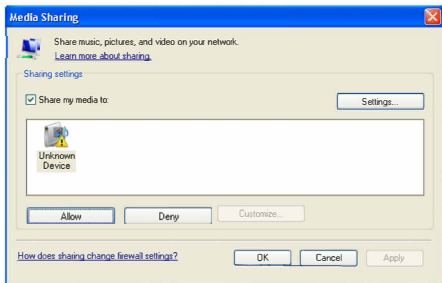
2.1 Windows XP/Windows Media 11

- 2.1.1 To add new media files to the library, select 'File > Add to Library...> Advanced Options', Click 'Add' and choose the files you wish to add and click 'OK'.
- 2.1.2 Now you need to connect your Internet radio to Windows Media Player 11 and configure it to allow the radio to access your media library. In order to this, you will need to do the following:
 - a. On the radio, go to the main menu and select <Media Centre> → <UPnP>.
 - b. It will scan for all available UPnP servers. Note, this may take a few seconds for the radio to complete its scan and before the scan has completed, the radio will display '[Empty]'. The radio will continue to display '[Empty]' if no UPnP servers and found.
 - c. After a successful scan. Select your UPnP server, by rotating the dial if there is more than one UPnP server, and then press OK.
- 2.1.3 Your PC will now prompt you that a device has attempted to connect to your UPnP server. In order to allow the radio to have access to the media files, you will need to click the 'Library' tab from Windows Media Player 11 and select the <Media Sharing> item to open the 'Media Sharing' window.

Selecting 'Media Sharing...' for Windows Media Player11:



2.1.4 From the 'Media Sharing' windows, the radio will be listed as an unknown device. Click on the unknown device listed, then click the 'Allow' button and then click 'OK'. Allowing the Radio to Connect:

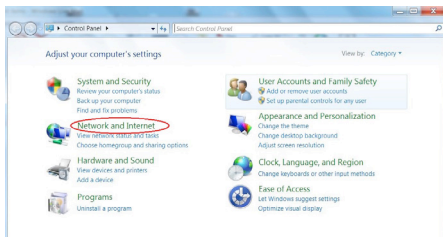


2.2 Windows 7/Windows Media Player 12

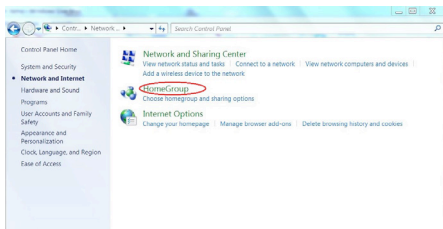
2.2.1 If you are using WMP 12, simply go to <File> and choose <Open> to retrieve the music files you would like to add to library.

2.2.2 Windows 7 or above requires the PC to be set as Home network and also with the Homegroup enabled to allow devices to access/play the media files on your Windows Media Player. Please find the steps below:

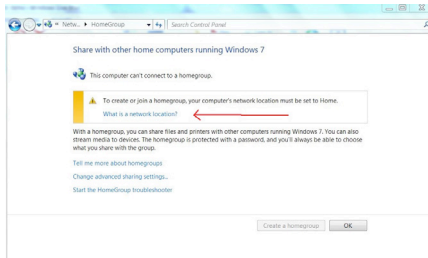
i) Go to <Control Panel>, select <Network and Internet>



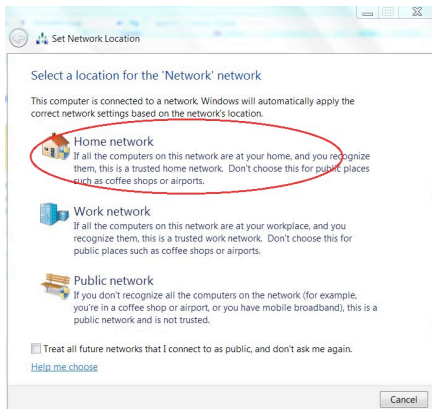
ii) Choose <HomeGroup>



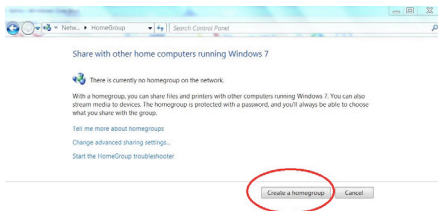
iii) Set the network location



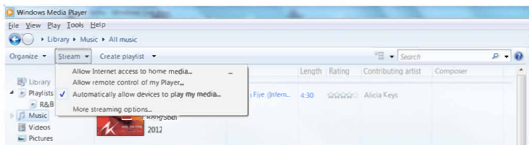
iv) Choose Home network



v) Create a homegroup, then choose the kind of media file to be accessed, such as music..etc.



- vi) Launch the Windows Media Player, select <Stream> and choose <Automatically allow devices to play my media> from the drop down list.
- vii) You can now enjoy the music streaming from the windows media player.



Music streaming via UPnP

1. Once the UPnP server is configured to share media files with your radio, you can start music streaming.
2. On the main menu, select <Media Centre> and choose <UPnP>
3. It may take a few seconds for the radio to complete the scan for available UPnP servers. If no UPnP servers are found, it will show <Empty List>.
4. After a successful scan is done, select your UPnP server.

5. The radio will show the media categories available from the UPnP server, e.g. 'Music', 'Playlists' etc.
6. Choose the media files that you wish to play.

INFORMATION CENTER

Weather

You can view the weather forecast all over the world and choose the desired region to display on Standby. To activate this feature, press "▶" and choose "add to standby display", then press "OK" to confirm.

"Current Date & Time" and "Current Weather" will display every 10 seconds alternately under the standby mode if the weather forecast display is started.

On standby mode, you can press "◀ ▶" buttons to display the previous/next day weather forecast.

Remark: The weather is just for reference only. It may have deviation to the actual weather.

Financial Information

You can get the information of Stock Market all over the world

Remark: The information is just for reference only. It may have deviation to the actual stock market info.

System Information

You can view the information of the radio such as the Version of the software/Wlan Mac/IP address..etc.

Bluetooth

You can turn on the Bluetooth function to pair with the mobile device such as mobile phone or tablet, to stream the music from your mobile device to play on the Internet radio adaptor.

1. Turn on the Bluetooth on your mobile device
2. Switch the mode to Bluetooth on the Internet Radio adaptor.
3. Your mobile device will start discovering the internet radio adaptor, look up the list with the name called "Scansonic i100 BT", then select to connect the device.
4. You can then start streaming your music from your mobile device to the Internet radio adaptor.

CONFIGURATION**Mode**

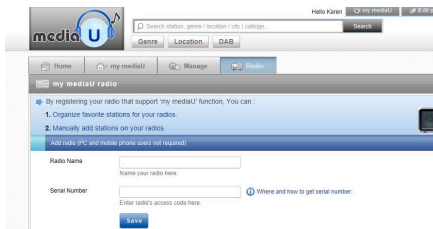
You can choose to display the Standby clock as Clock Radio mode or Internet Radio mode.

Manage my mediaU

You can tailor made your own favourite station list by operating on PC. Firstly you need to register an account on MediaU.

On your computer, go to <http://www.mediayou.net/web/index.php>, this is the radio portal playing on your radio.

Register as member by selecting "Join now". After you have become the member, then you can login and register your radio. Select "**Radio**" on the following screen and do the radio registration.



You have to find out the Mac Address to register the radio. To locate the MAC address, please follow the path below:

1. Go to Main Menu and select “Information Center”
2. Go to System Information
3. Choose Wireless Info and you will find the Mac Address for your radio

You can then organize your own favourite stations or add any new station which is currently not found on the station list. After the work is done, follow the steps below to sync the changes to the radio:

Go to Configuration → Manage my MediaU → Enable

Then you will see “Manage My mediaU” appear on the main menu.

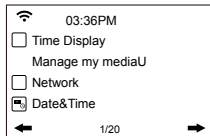
The radio will synchronize the changes immediately and you will find your favourite list under “My MediaU” on the radio menu.

For the added URL, we support the stream protocol as follow:

- HTTP/1.1 Audio Transport
- MMS
- RTSP

Whenever you have added new URL, you need to refresh the list on the radio by <Disable> the My Media U and <Enable> it again under Configuration.

It allows maximum 5 users to register with the same radio and you can switch to listen the favorite list under one user at a time



Network

Wireless Network Configuration

Press “Enter” to scan for wireless network and list out.

Wireless Network (WPS PBC)

This is the option for you to use WPS function, which means you can set the wireless without enter any passwords for Wi-Fi protected if your router has the function.

Manual Configuration

You can set the DHCP on or off, and enter the SSID as you known, or delete the connected WiFi.

Check network when power on

This is set to enable or disable “Check network when power on”.

Date & Time

You can choose Auto Detect or Manual Setup the Current Date & Time. You can press “▲” “▼” buttons for parameter setting, and move cursor with “◀” “▶” buttons and press ‘OK’ to confirm.

Time Format setting

Time format setting: 12 hours/24 hours

Date Format setting

Date format: YY/MM/DD, DD/MM/YY and MM/DD/YY

Alarm Clock**1. Alarm Clock types (2 Alarm Clock setting)**

You can select your favorite Alarm setting for every day, once or particular day in the week.

2. Alarm Clock (NAP function): If you would like to take a nap or need the Alarm in short time, you can use this function. You can select the time from 5 minutes up to 120 minutes. No Snooze function available for the NAP alarm.**3. Alarm Volume:** You can set the alarm sound level.

Remark: The NAP Alarm will only with beeping sound.

4. Alarm Sounds setting: Beep/Melody/Internet Radio**5. When the Alarm comes on,** press any key except “Power” button, you can enter the “Snooze” mode. You can press “Power” button to cancel the alarm when the alarm sounds again 5 minutes later.

Remark: You can select any internet radio station as Alarm tone from the favorite station. When the internet station doesn't work in 1 minute, it will auto set into beeping sound.

Timer

The Timer can be set for 99:59. Use “◀” “▶” or “▲” “▼” to adjust the time you desire. Press <OK> to start the timer. Whenever you want to pause, press <OK> and to resume it, press it again.

To cancel the timer, press and hold the <OK> button until the 00:00 appears, then press the <OK> to exit.

Language

There are 17 Languages available, such as English, German, French, Norwegian, Italiano, Svenska, Dansk and others.

Dimmer

You can adjust the backlight of the LCD with below settings:

1. Power Saving

You can set the backlight dim down level when there is no operation after 15 seconds.

2. Turn on

The backlight will not dim down even there is no operation if this option is selected. You can adjust the backlight level you want.

Display

You can choose the display show in color or monochrome.

Power Management

This function is to allow the radio to go to Standby if there is no internet signal received in order to save power. The default setting is 30 minutes, the radio will go into Standby after 30 minutes when the radio does not receive any internet signal. Other time frame for 5 minutes and 15 minutes are available.

Sleep Timer

You can set the timer to put the radio on standby after certain time elapsed, from 15 minutes to 180 minutes with the step of every 15 minute.

You also can do the setting with the "Sleep" button from remote control, when you press "Sleep", then you can see the sleep timer on the top right corner of the display.

Buffer

You can select your preferred buffering time.

Weather

You can set the display of weather forecast on the standby mode and the temperature units.

- You can select Weather Display On/Off and Location.
- Temperature units: 1) Celsius, 2) Fahrenheit

Local Radio Setup

The radio will detect your local area stations automatically and it will display under the "Internet radio" you will find all the stations under "Internet radio" → "Local Radio".

If you would like to change the Local area stations to other countries, you can choose "Manual setup" to make the change.

Playback Setup

You can set up the playback as Off, Repeat one, Repeat all, Shuffle

DLNA Setup

When the radio is connected by other DLNA devices, the name of the radio will appear as "AirMusic". This is the name in default. You can change other name here as you desire.

Please note: The DLNA feature is compatible and works with corresponding third party Android APPs. Apple devices are not supported.

Equalizer

Select your prefer music effect.

Resume When Power On

This is set to ON or OFF of "Resume When Power On".

Software update

Upgrade information will pop up on the display when there is upgrade available on the server.

Reset to default

You can do this factory reset to empty all of the settings and it comes back to default settings.

**** Please note all the Station presets, Settings and configuration will be lost after you have performed the "Factory Reset".**

TROUBLE SHOOTING**1. If you have trouble connecting the radio to your wireless network, these steps may help to resolve the problem:**

- Confirm that a Wi-Fi or Ethernet Wired connected PC can access the internet (i.e. can browse the web) using the same network.
- Check that a DHCP server is available, or that you have configured a static IP address on the radio.
- Check that you firewall is not blocking any outgoing ports.
- Some access points may be set so that only equipment with registered MAC addresses can connect to them. This is one possible cause of the Internet Radio being unable to connect to the Wi-Fi network, and the Internet Radio display will show Bad ESSID or key. To overcome this problem you will need to add the Internet Radio's MAC address to the list of allowed equipment in your access point. The Internet Radio's MAC address can be found using the menu <Information Center ->System Information -> Wireless Info -> MAC address>. You

will need to refer to the guide for you Access Point in order to enter the Internet Radio as an allowed piece of equipment.

- If you have an encrypted network, check that you have entered the correct key or passphrase into the radio. Remember that text-format keys are case sensitive.
 - If your wireless network name(ESSID) is 'Hidden'(a setting on the wireless access point), then you can either turn on the name, or you can manually enter the name into the internet radio and media player, Select <Configure -> Network -> Manual Configuration-> Wireless -> Enter ESSID>. Confirm if the Network is encrypted, e.g. requires a WEP or WPA key, then enter the network name.
- 2. If your radio can connect to the network successfully, but is unable to play particular stations, it may be due to one of the following reasons:**
- The station is not broadcasting at this time of the day (remember it may be located in a different time zone).
 - The station has too many people trying to attach to the radio station server and the server capacity is not large enough.
 - The station has reached the maximum allowed number of simultaneous listeners.
 - The station is not broadcasting anymore.
 - The link on the radio is out of date. This is updated automatically every day, so the next time you turn on the link will be recognised.
 - The internet connection between the server (often located in a different country) and yours is slow. Some internet service providers may fail to stream in certain geographical areas. Try using a PC to play back the stream via the broadcaster's web site. If you can play back the station with a PC, please report to the customer service where you bought this radio. If you have a laptop, try connecting it if your Internet Radio cannot find the station.

3. When you scan for PCs under UPnP function, none can be found, or the PC you are looking for does not appear in the list:

- You have not connected to the wireless Access point. On the internet radio, select 'Configuration', 'Network', 'Wireless network connection' and then select your Wireless network. (You may need to enter a security key to access the network wirelessly).
- You have a firewall set on your PC which is stopping you accessing shared files.
- If you have a third party firewall (Like Norton, or Zone Alarm) that will have its own control panel and you will need to consult the manual for your firewall.
- If your PC is connected to a managed network, with a server sometimes the PC being searched for needs to be server Workgroup.
- For Windows 7 or above, Home group is need to be established in order to access UPnP.

4. You can see the PC you want to play music from, but cannot find any folders on the PC:

- You have a firewall running which is preventing the internet radio from seeing the shared folder. As a quick check, you can disable firewalls like Norton to see if this overcomes the problem, if this resolves the issue then you can either leave the firewall off, or allow file sharing through the fire wall.

Note: If you firewall is required to provide security for your system, it should not be left off.

5. I can't share a folder , as the option is not highlighted:

The share folder option will not be available until you have turned simple file sharing on. Run the wizard.

Scan Error:

When the internet radio is scanning the content of the folders on a PC, it is possible that a scan error may occur if the windows file sharing application times out. This is most likely to occur if both the PC with the media content and the Internet Radio are connected wirelessly.

Try re-connecting the PC with the media content into the network via cable. This will dramatically increase the speed at which the Internet Radio is able to scan the content of the Media PC.

Playlists:

Some media ripping applications allow 'Playlists' to be created. The Internet Radio is able to detect and stream these playlists, but they must be stored in the folder with the rest of the Media content and they must have the file extension.m3u.

Windows Media player can create suitable playlist, just select 'create new playlist', drag and drop the tracks you want into the playlist, then use 'Save as' to ensure the file type is .m3u. (Existing play lists can be opened and re-saved in this format) When the Internet Radio detects you have playlists, it will enable a new menu option allowing the playlist to be selected and added to the queue. If you re-connect to another PC of folder, which does not have any Playlists in the .m3u. format, the playlist option will not be presented in the menu.

6. If the Internet Radio keeps re-buffering radio station:

- The Internet Radio is streaming the data from the radio station via your broadband connection, if there is a high error rate on your broadband connection, or the connection is intermittent, then it will cause the Internet Radio to pause until the connection is re-established and it has received enough data to start playing again.

- If your Internet Radio keeps stopping, please check the DSL modem to ensure that the Broadband line is not suffering a high error rate or disconnections. If you are experiencing these problems, you will need to contact your broadband supplier.

7. What is Buffering?

When playing a stream, the Internet Radio/Media player, downloads a small amount of the stream before it starts playing. This is used to fill in any gaps in the stream that may occur if the internet or the wireless network is busy.

The Internet Radio streams music data from the PC while you are listening. If a stream gets blocked or experiences Internet congestion while transferring it may stop/interfere with the quality of play. If this happens, check your internet connection speed- it must be faster than the speed of the streams.

TECHNICAL SPECIFICATION

Model: IRT-01CB

Power input: 5V ...1A

Power voltage: 100-240V~50/60 Hz

Wireless Network: IEEE802.11b/g/n

Security Protocol: WEP/WPA/WPA2

Audio sockets: 3.5 mm earphone jack, 3.5 mm audio out jack

Unit Dimension: 135 x 38 x 98 mm (L x D x H)

Remark: Specification may vary without notice

What's included in the box:

- * Internet Radio
- * Power adaptor
- * Remote control
- * RCA cable
- * User manual

WEEE and Recycling

The European laws do not allow any more the disposal of old or defective electric or electronic devices with the household waste. Return your product to a municipal collection point for recycling to dispose of it. This system is financed by the industry and the ensures environmentally responsible disposal and the recycling of valuable raw materials.

SCANSONIC

Made in China

Imported by Dantax Radio A/S

Bransagervej 15 · 9490 Pandrup · Denmark

www.scansonic.dk

SCANSONIC

I100 BT